



QINGDAO ANCHOR CHAIN



青岛锚链股份有限公司  
QINGDAO ANCHOR CHAIN CO.,LTD.

# 质量方针

## QUALITY GUIDELINE

准确、及时地为顾客  
提供一流的产品和服务

SUPPLYING OUR CUSTOMERS WITH THE BEST QUALITY AND  
TOPPING SERVICES TIMELY AND EXACTLY



# 公司简介

# COMPANY INTRODUCTION

青岛锚链股份有限公司创建于1958年，经过半个世纪的不懈努力和奋斗，现已发展成为生产船用锚链和海洋工程链的世界著名专业公司。

公司采用世界先进的制链设备、检测设备和工艺技术，按照ISO1704和GB/T549-1996标准及船级社规范生产Φ6-Φ122mm各种级别的有档和无档电焊锚链、海洋工程链、航标系泊链等以及与锚链相配套的锚链附件，同时还可以按照客户的要求生产各种非标准链条和附件。

公司先后获得了ISO9001质量管理体系认证和美国ABS、法国BV、中国CCS、挪威DNV、德国GL、韩国KR、英国LR、日本NK、意大利RINA和中国ZY九个国家十个船级社的工厂认可。公司是中国船用锚链和海洋工程链的出口基地之一。超过80%的产品出口到50多个国家和地区，凭借优质可靠的质量、真诚一流的服务和互惠的供需方利益，深受客户的信赖和赞誉。

公司的质量方针是：准确、及时地向顾客提供一流的产品和服务。

热烈欢迎海内外新老朋友前来洽谈业务、交流技术。

Qingdao Anchor Chain Co., Ltd., established in 1958, has been developed into a world famous and specialized company in making marine anchor chains and ocean engineering chains.

The company has adopted the most advanced chain making equipment, inspection measurement instruments and industrial technology in the world. According to International Standard ISO1704, National Standard GB/T549-1996 and the specification from the classification societies, the company can produce and supply all kinds of grades of marine stud and studless flash welded chains, ocean engineering chains and mooring buoy chains with diameters ranging from 6 to 122mm and all kinds of accessories to match above chains. It can also produce all kinds of non-standard chains and accessories in different uses as per the requirements from the customers.

The company has successfully gained ISO9001 quality assurance system approval from DNV certification B.V., the Netherlands and the products have been approved by 10 classification societies of 9 countries such as ABS (USA), BV (France), CCS (China), DNV (Norway), GL (Germany), KR (Korea), LR (UK), NK (Japan), RINA (Italy) and ZY (China) and it can supply their relevant certificates as well.

The company has been developed into an export base of marine anchor chains and ocean engineering chains in China. More than 80% of its products are exported to over 50 countries and regions around the world. It has received the highest recognition and trust from the customers based on reliable good quality, excellent service and mutual benefit.

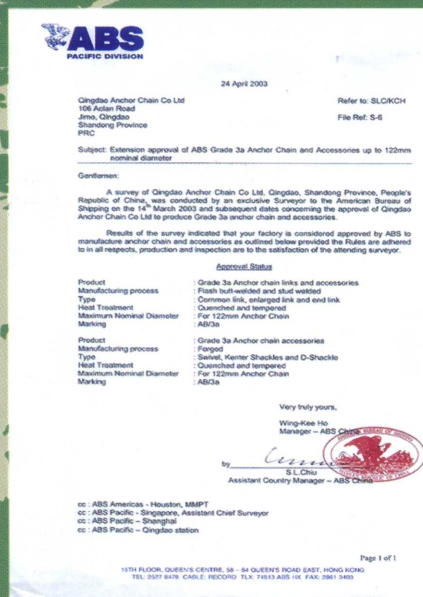
The quality guide line: Supplying our customers with the best quality and topping services timely and exactly.

Warmly welcome old and new friends at home and abroad to hold trade talks and technology communications.

# 国际认可证书



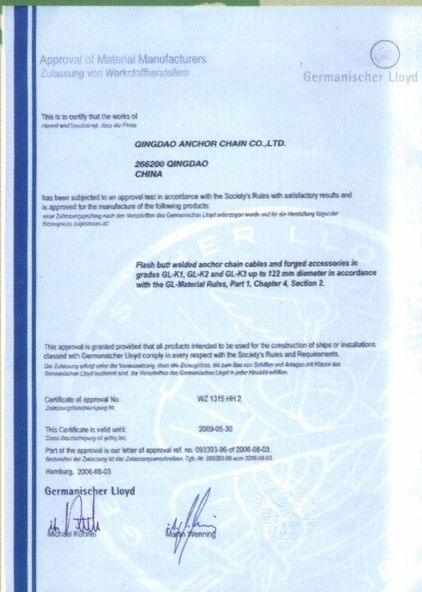
ISO9001



ABS



DNV



GL



KR





# 我们的客户遍世界



Our customers are in all over the world



# 工艺流程

# Process of manufacture



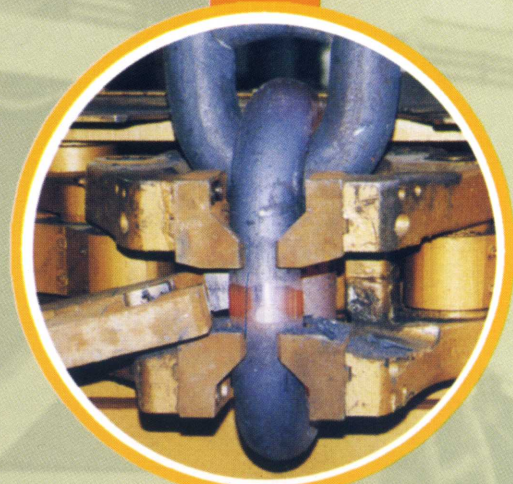
下料  
Cutting



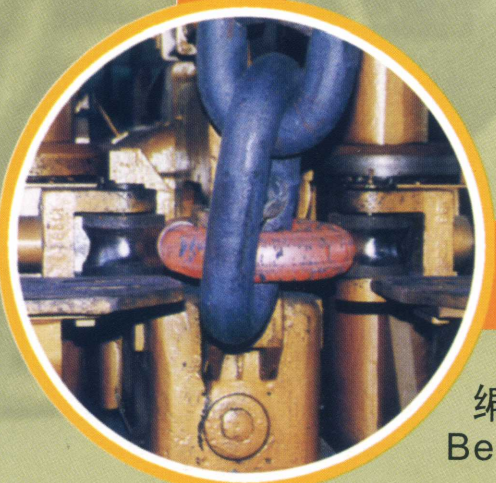
压档  
Stud Setting



加热  
Heating



去刺  
Trimming



编环  
Bending



闪光焊接  
Flash butt welding



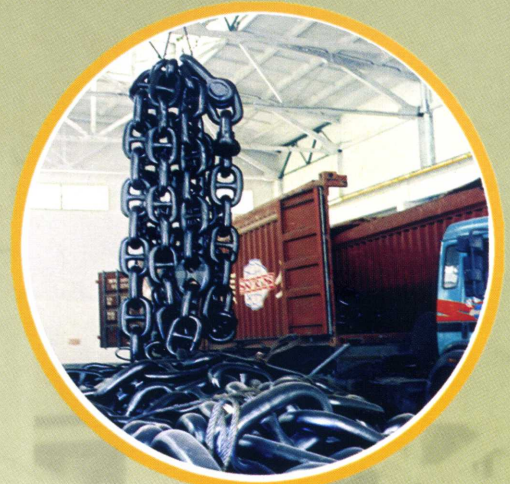


# 工艺流程

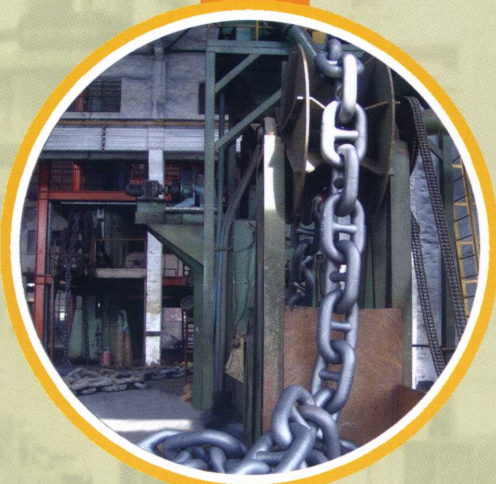
# Process of manufacture



热处理  
Heat Treatment



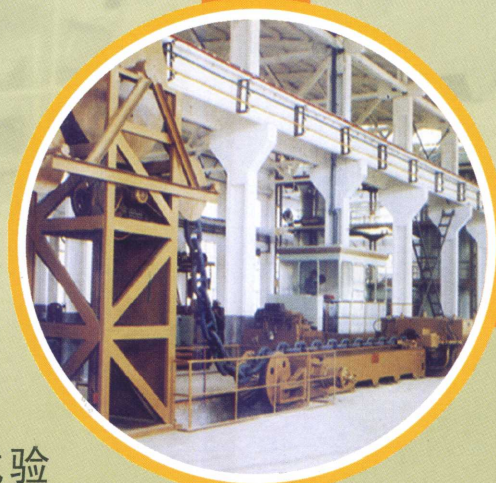
装运  
Delivery



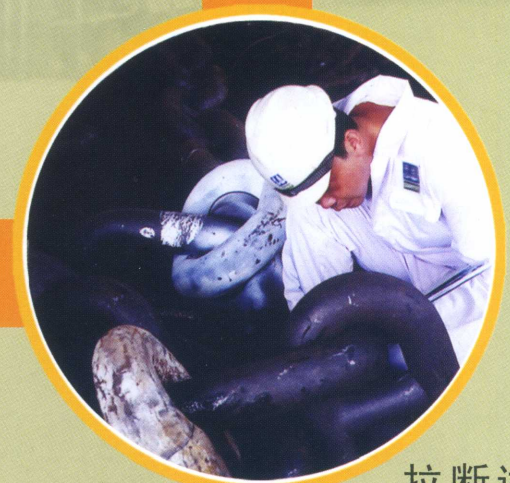
表面抛丸  
Shot Blasting



无损探伤  
NDT



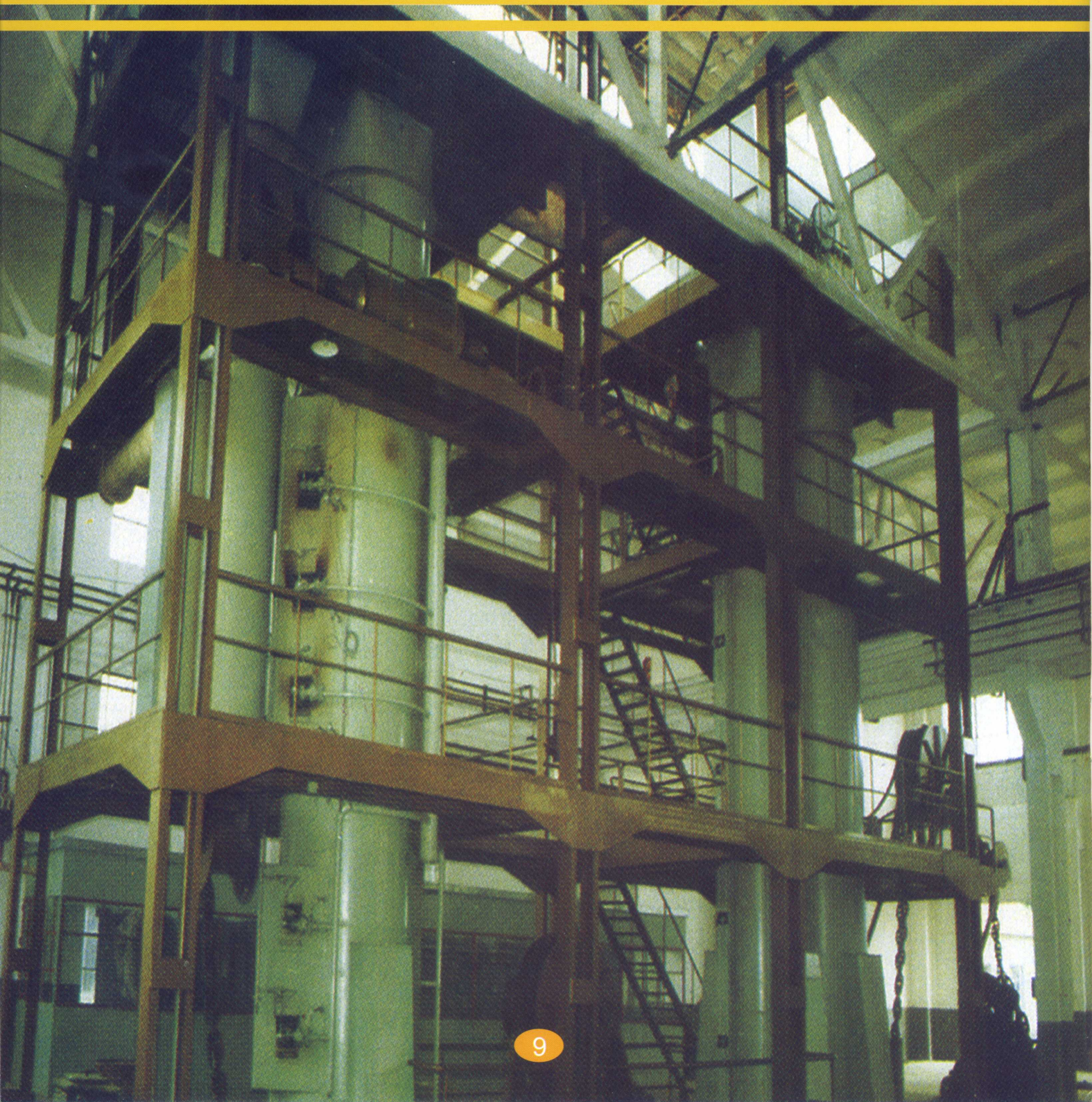
拉力试验  
Proof Testing



拉断试验  
Breaking Testing

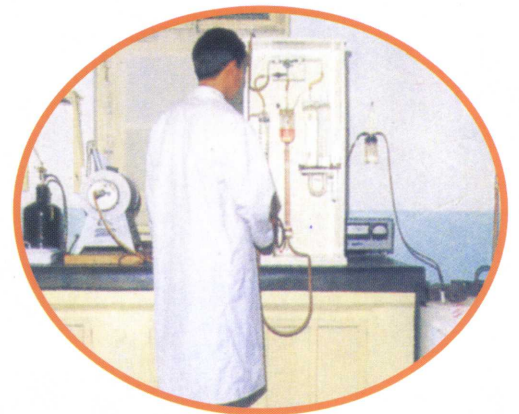
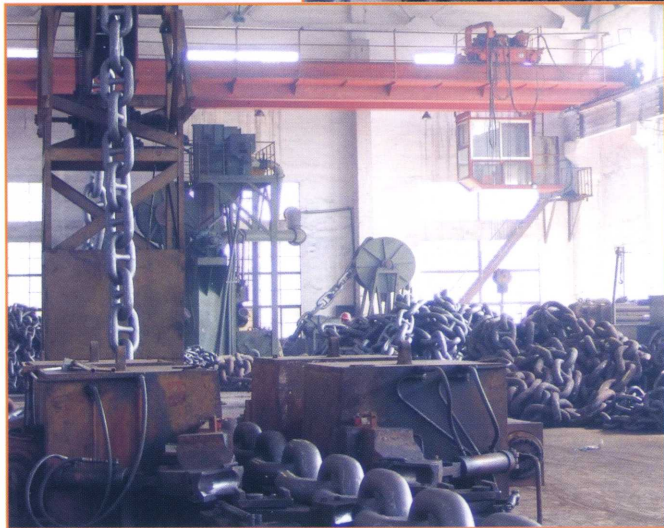
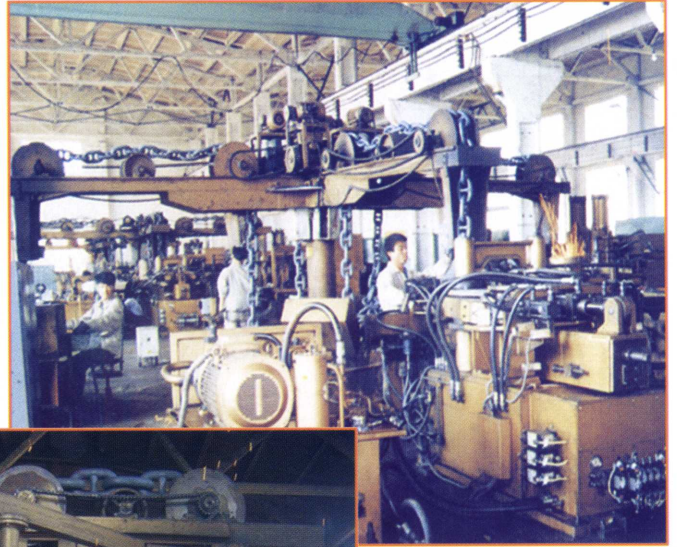
# 设备与技术

Equipment & Technology



設備與技術

Equipment & Technology



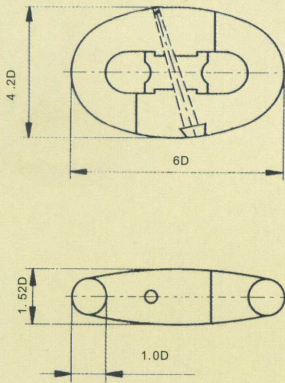


产品图样

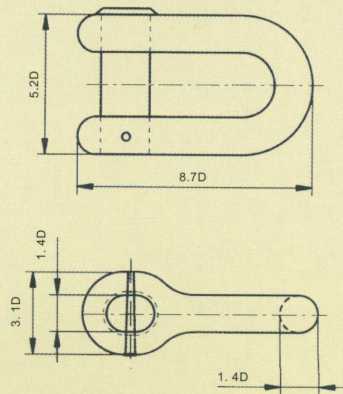
Drawings of Products



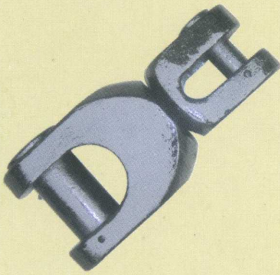
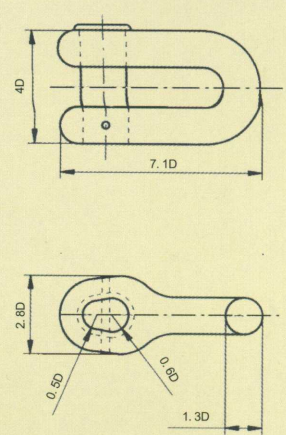
KENTER SHACKLE=KS (肯特卸扣)



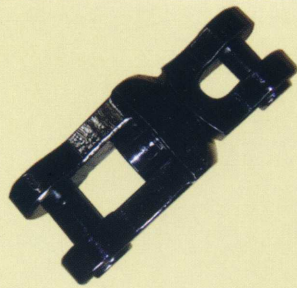
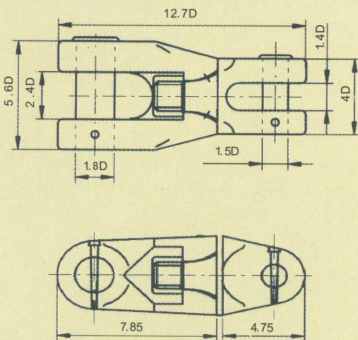
ANCHOR SHACKLE=A.S (末端卸扣)



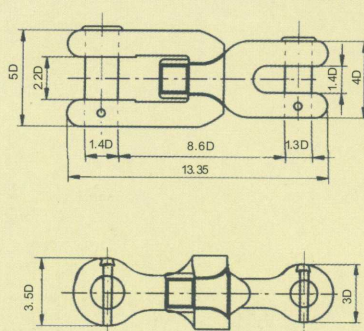
JOINING SHACKLE=JS (连接卸扣)



ANCHOR SWIVEL SHACKLE (a)=A.S.W.S (a)  
(A型转环卸扣)



ANCHOR SWIVEL SHACKLE (b)=A.S.W.S (b)  
(B型转环卸扣)



Buoy Shackle  
Type "A"



Buoy Shackle  
Type "B"

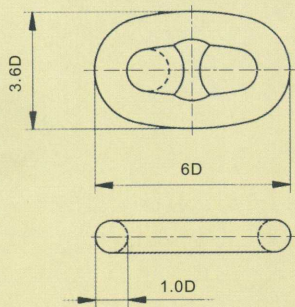




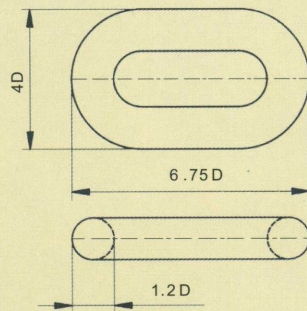
产品图样 Drawings of Products



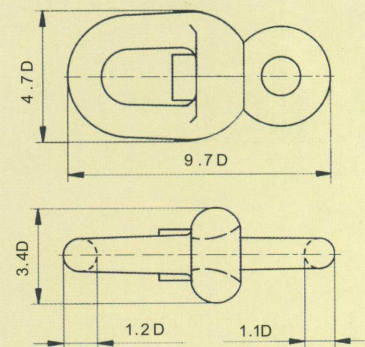
COMMON LINK=C (普通链环)



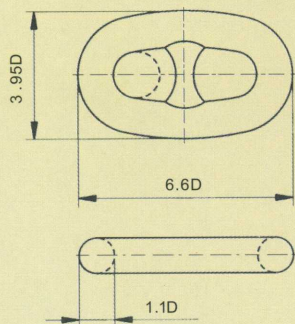
END LINK=E (末端环)



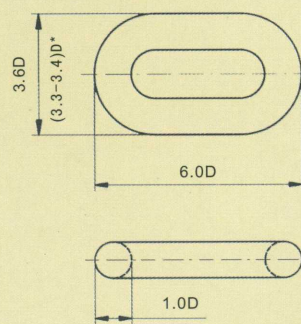
SWIVEL=SW (转环)



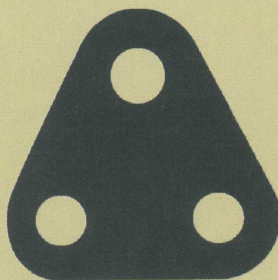
ENLARGED LINK=EL (加大链环)



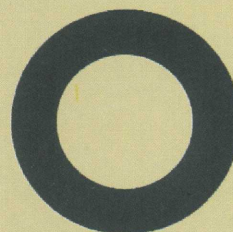
STUDLESS LINK=SL (无档链)



梨形环  
Pear Shaped Link



三眼板  
Triangle Plate (TP)



圆环  
Round Link (RL)



锚链及附件、系泊链及附件试验负荷

TESTING LOAD OF ANCHOR CHAIN AND ACCESSORIES & MOORING CHAIN

链径 Diameter Of Chain	船用锚链 ANCHOR CHAIN				海洋系泊链 OFFSHORE MOORING CHAIN											
	ABS,BV,CCS,CR,DNV,GL, KR,LR,NK,RINA,RMRS				API		ABS	DNV ABS	ABS/DNV	ABS/DNV			ABS/DNV			
	Grade 2		Grade3		ORQ		C/EL/E	C/EL/E/SL	C/EL/E/SL	C/EL/E	SL	C/EL/E/SL	C/EL/E	SL	C/EL/E/SL	
	拉力负荷	破断负荷	拉力负荷	破断负荷	拉力负荷	破断负荷	拉力负荷	拉力负荷	破断负荷	拉力负荷	拉力负荷	破断负荷	拉力负荷	拉力负荷	破断负荷	
	PL	BL	PL	BL	PL	BL	PL	PL	BL	PL	PL	BL	PL	PL	BL	
	C=0.098	C=0.0137	C=0.0137	C=0.0196	C=0.014	C=0.0211	C=0.0148	C=0.0156	C=0.0223	C=0.0180	C=0.0174	C=0.0249	C=0.0216	C=0.0192	C=0.0274	
mm	KN	KN	KN	KN	KN	KN	KN	KN	KN	KN	KN	KN	KN	KN	KN	
12.5	66	92	92	132												
14	82	116	116	165	---	---	---	---	---	---	---	---	---	---	---	
16	107	150	150	216	---	---	---	---	---	---	---	---	---	---	---	
17.5	127	179	179	256	---	---	---	---	---	---	---	---	---	---	---	
19	150	211	211	301	---	---	---	---	---	---	---	---	---	---	---	
20.5	175	244	244	349	---	---	---	---	---	---	---	---	---	---	---	
22	200	280	280	401	---	---	---	---	---	---	---	---	---	---	---	
24	237	332	332	476	---	---	---	---	---	---	---	---	---	---	---	
26	278	389	389	556	---	---	---	---	---	---	---	---	---	---	---	
28	321	449	449	642	---	---	---	---	---	---	---	---	---	---	---	
30	368	514	514	735	---	---	---	---	---	---	---	---	---	---	---	
32	417	583	583	833	---	---	---	---	---	---	---	---	---	---	---	
34	468	655	655	937	668	1007	706	745	1064	859	831	1188	1031	916	1308	
36	523	732	732	1050	746	1124	789	832	1189	960	928	1327	1151	1022	1460	
38	581	812	812	1160	828	1248	876	923	1319	1065	1029	1473	1278	1135	1621	
40	640	896	896	1280	914	1376	967	1019	1456	1176	1136	1626	1411	1253	1789	
42	703	981	981	1400	999	1513	1056	1114	1592	1285	1242	1777	1542	1370	1956	
44	769	1080	1080	1540	1097	1654	1160	1223	1748	1411	1364	1951	1693	1503	2147	
46	837	1170	1170	1680	1194	1800	1263	1331	1902	1535	1484	2124	1843	1636	2337	
48	908	1270	1270	1810	1295	1952	1369	1443	2063	1665	1610	2304	2037	1775	2535	
50	981	1370	1370	1960	1400	2110	1480	1561	2230	1800	1743	2490	2160	1918	2740	
52	1060	1480	1480	2110	1508	2273	1594	1682	2402	1939	1877	2682	2327	2066	2952	
54	1140	1590	1590	2270	1620	2441	1712	1806	2580	2083	2017	2881	2499	2219	3170	
56	1220	1710	1710	2430	1735	2615	1834	1935	2764	2231	2160	3086	2677	2378	3396	
58	1290	1810	1810	2600	1851	2794	1960	2068	2953	2383	2308	3297	2860	2540	3628	
60	1380	1940	1940	2770	1976	2978	2089	2203	3147	2540	2460	3514	3048	2708	3867	
62	1470	2060	2060	2940	2101	3166	2221	2343	3347	2701	2616	3737	3242	2879	4112	
64	1560	2190	2190	3130	2230	3360	2357	2486	3551	2867	2776	3965	3440	3055	4364	
66	1660	2310	2310	3300	2361	3559	2496	2633	3761	3036	2940	4200	3643	3235	4621	
68	1750	2450	2450	3500	2496	3762	2639	2784	3976	3209	3108	4440	3851	3420	4885	
70	1840	2580	2580	3690	2631	3970	2785	2938	4196	3387	3289	4685	4064	3610	5156	



锚链及配件、系泊链及配件试验负荷

TESTING LOAD OF ANCHOR CHAIN AND ACCESSORIES & MOORING CHAIN

链径 Diameter Of Chain	船用锚链 ANCHOR CHAIN				海洋系泊链 OFFSHORE MOORING CHAIN											
	ABS,BV,CCS,CR,DNV,GL, KR,LR,NK,RINA,RMRS				API		ABS	DNV ABS	ABS/DNV	ABS/DNV			ABS/DNV			
	Grade 2		Grade3		ORQ		RQ3	C/EL/E/SL	C/EL/E/SL	C/EL/E	SL	C/EL/E/SL	C/EL/E	SL	C/EL/E/SL	
	拉力负荷	破断负荷	拉力负荷	破断负荷	拉力负荷	破断负荷	拉力负荷	拉力负荷	破断负荷	拉力负荷	拉力负荷	破断负荷	拉力负荷	拉力负荷	破断负荷	
	PL	BL	PL	BL	PL	BL	PL	PL	BL	PL	PL	BL	PL	PL	BL	
	C=0.098	C=0.0137	C=0.0137	C=0.0196	C=0.014	C=0.0211	C=0.0148	C=0.0156	C=0.0223	C=0.0180	C=0.0174	C=0.0249	C=0.0216	C=0.0192	C=0.0274	
mm	KN	KN	KN	KN	KN	KN	KN	KN	KN	KN	KN	KN	KN	KN	KN	

73	1990	2790	2790	3990	2847	4291	3010	3175	4535	3660	3545	5064	4392	3900	5572
76	2150	3010	3010	4300	3066	4621	3242	3419	4884	3942	3818	5454	4731	4206	6001
78	2260	3160	3160	4500	3216	4847	3400	3587	5123	4135	4004	5720	4962	4411	6295
81	2410	3380	3380	4820	3446	5194	3643	3843	5490	4431	4291	6130	5317	4727	6745
84	2580	3610	3610	5160	3683	5550	3893	4107	5866	4735	4585	6550	5682	5051	7208
87	2750	3850	3850	5500	3925	5916	4149	4377	6252	5046	4887	6981	6056	5383	7682
90	2920	4090	4090	5840	4173	6289	4412	4653	6647	5365	5196	7422	6439	5724	8167
92	3040	4260	4260	6080	4242	6544	4590	4842	6916	5582	5405	7722	6699	5955	8497
95	3230	4510	4510	6440	4599	6932	4862	5128	7326	5913	5726	8180	7096	6308	9001
97	3340	4680	4680	6690	4774	7195	5047	5323	7604	6138	5943	8490	7365	6547	9343
100	3530	4940	4940	7060	5040	7596	5328	5620	8028	6480	6275	8964	7776	6912	9864
102	3660	5120	5120	7320	5220	7868	5519	5821	8315	6712	6500	9285	8054	7160	10217
105	3850	5390	5390	7700	5495	8282	5809	6128	8753	7065	6842	9773	8478	7536	10754
107	3980	5570	5570	7960	5681	8561	6005	6334	9048	7304	7072	10103	8764	7791	11118
111	4250	5940	5940	8480	6058	9130	6401	6755	9650	7789	7543	10775	9347	8309	11856
114	4440	6230	6230	8890	6346	9565	6709	7077	10109	8159	7901	11287	9791	8704	12420
117	4650	6510	6510	9300	6639	10005	7018	7402	10574	8535	8265	11807	10242	9105	12993
120	4850	6810	6810	9720	6953	10452	7331	7733	11047	8916	8634	12334	10700	9511	13573
122	5000	7000	7000	9990	7135	10753	7542	7956	11365	9173	8883	12690	11008	9785	13964
124	5140	7200	7200	10280	7336	11057	7755	8175	11688	9433	9134	13048	11319	10062	14358
127	5350	7490	7490	10710	7641	11516	8078	8515	12172	9825	9514	13951	11790	10480	14955
130	5570	7800	7800	11140	7950	11981	8404	8858	12663	10222	9898	14140	12266	10903	15559
132	5720	8000	8000	11420	8157	12294	8623	9090	12994	10488	10157	14509	12586	11187	15965
137	6080	8510	8510	12160	8682	13085	9178	9674	13829	11163	10809	15442	13395	11907	16992
142	6450	9030	9030	12910	9214	13887	9740	10268	14677	11847	11472	16389	14217	12637	18034
147	6840	9560	9560	13660	9753	14670	10310	10869	15536	12540	12144	17348	15049	13377	19089
152	7220	10100	10100	14430	10299	15522	10887	11477	16405	13242	12823	18318	15890	14125	20157
157	7600	10640	10640	15200	11126	16768	11762	12090	17282	13950	13508	19297	16740	14880	21234
162	7990	11180	11180	15980	11405	17189	12057	12708	18166	14663	14199	20284	17596	15641	22320

Note: Test Load=c X d<sup>2</sup> (44-0.08Xd)



锚链及附件、系泊链及附件试验负荷

TESTING LOAD OF ANCHOR CHAIN AND ACCESSORIES & MOORING CHAIN

链径 Diameter Of Chain	船用锚链 ANCHOR CHAIN				海洋系泊链 OFFSHORE MOORING CHAIN											
	ABS,BV,CCS,CR,DNV,GL, KR,LR,NK,RINA,RMRS				API		ABS	DNV ABS	ABS/DNV	ABS/DNV			ABS/DNV			
	Grade2		Grade3		ORQ		RQ3	NVR3/RQ3	NVR3/RQ3	C/EL/E/SL	C/EL/E	SL	C/EL/E/SL	C/EL/E	SL	C/EL/E/SL
	拉力负荷 PL	破断负荷 BL	拉力负荷 PL	破断负荷 BL	拉力负荷 PL	破断负荷 BL	拉力负荷 PL	拉力负荷 PL	破断负荷 BL	拉力负荷 PL	拉力负荷 PL	破断负荷 BL	拉力负荷 PL	拉力负荷 PL	破断负荷 BL	
	C=1422	C=1991	C=1991	C=2844	C=2030.5	C=3060.3	C=2147	C=2265.2	C=3236	C=2610	C=2527	C=3610	C=3125	C=2783.9	C=3977	
in	lbf	lbf	lbf	lbf	lbf	lbf	lbf	lbf	lbf	lbf	lbf	lbf	lbf	lbf	lbf	
1/2	15300	21400	21400	30600												
9/16	19300	27000	27000	38600	---	---	---	---	---	---	---	---	---	---	---	
5/8	23700	33200	33200	47500	---	---	---	---	---	---	---	---	---	---	---	
11/16	28600	40100	40100	57300	---	---	---	---	---	---	---	---	---	---	---	
3/4	34000	47600	47600	68000	---	---	---	---	---	---	---	---	---	---	---	
13/16	39800	55700	55700	79500	---	---	---	---	---	---	---	---	---	---	---	
7/8	46000	64400	64400	91800	---	---	---	---	---	---	---	---	---	---	---	
15/16	52600	73700	73700	105000	---	---	---	---	---	---	---	---	---	---	---	
1	59700	83600	83600	119500	---	---	---	---	---	---	---	---	---	---	---	
1 1/16	67200	94100	94100	135000	---	---	---	---	---	---	---	---	---	---	---	
1 1/8	75000	105000	105000	150000	---	---	---	---	---	---	---	---	---	---	---	
1 3/16	83400	116500	116500	167000	---	---	---	---	---	---	---	---	---	---	---	
1 1/4	92200	129000	129000	184000	---	---	---	---	---	---	---	---	---	---	---	
1 5/16	101500	142000	142000	203000	---	---	---	---	---	---	---	---	---	---	---	
1 3/8	111000	155000	155000	222000	158187	238413	167263	176471	252101	203333	196867	281238	243454	216880	309829	
1 7/16	120500	169000	169000	241000	172361	259777	182251	192284	274691	221553	214507	306439	265269	236314	337592	
1 1/2	131000	183500	183500	262000	187095	281983	197829	208721	298172	240491	232843	332633	287944	256515	366449	
1 9/16	142000	198500	198500	284000	202381	305022	213993	225774	322534	260140	251868	359811	311471	277473	396390	
1 5/8	153000	214000	214000	306000	218215	328885	230735	243437	347767	280492	271573	387961	335838	299181	427401	
1 11/16	166500	229000	229000	327000	234589	353564	248048	261704	373863	301540	291951	417072	361039	321631	459472	
1 3/4	176000	247000	247000	352000	251498	379048	265927	280568	400811	323274	312994	447134	387062	344814	492591	
1 13/16	188500	264000	264000	377000	268935	405330	284366	300021	428601	345689	334696	478136	413899	368721	526745	
1 7/8	201000	281000	281000	402000	286896	432399	303357	320057	457225	368775	357048	510068	441541	393346	561923	
1 15/16	214000	299000	299000	427000	305373	460247	322894	340670	486671	392526	380043	542918	469978	418679	598112	
2	227000	318000	318000	454000	324361	488865	342971	361853	516932	416932	403674	576676	499201	444712	635302	
2 1/16	241000	337000	337000	482000	343853	518243	363582	383598	547997	441988	427932	611331	529200	471437	673481	
2 1/8	255000	357000	357000	510000	363844	548373	384719	405899	579856	467684	452811	646873	559966	498845	712635	
2 3/16	269000	377000	377000	538000	384327	579244	406378	428750	612500	494013	478303	683290	591491	526928	752755	
2 1/4	284000	396000	396000	570000	405297	610849	428551	452144	645920	520968	504400	720572	623764	555679	793827	
2 5/16	299000	418000	418000	538000	426747	643178	451232	476074	680105	548540	531096	758708	656776	585088	835840	
2 3/8	314000	440000	440000	628000	448672	676222	474414	500532	715046	576721	558381	797687	690519	615147	878782	
2 7/16	330000	462000	462000	660000	471064	709972	498092	525514	750733	605505	586250	837499	724982	645849	922641	
2 1/2	346000	484000	484000	692000	493920	744418	522258	551010	787158	634883	614693	878133	760157	677184	967406	
2 9/16	363000	507000	507000	726000	517231	779553	546907	577016	824309	664847	643705	919578	796034	709145	1013064	
2 5/8	379000	530000	530000	758000	540993	815365	572032	603524	862177	695390	673276	961823	832603	741723	1059604	
2 11/16	396000	554000	554000	792000	565198	851847	597626	630528	900754	726504	703401	1004858	869857	774910	1107014	
2 3/4	413000	578000	578000	826000	589842	888989	623684	658020	940029	758181	734071	1048672	907784	808698	1155282	
2 13/16	431000	603000	603000	861000	614918	926783	650199	685994	979992	790414	765278	1093254	946377	843078	1204397	
2 7/8	449000	628000	628000	897000	640420	965218	677164	714444	1020634	823194	797016	1138593	985625	878042	1254345	





锚链及附件、系泊链及附件试验负荷

TESTING LOAD OF ANCHOR CHAIN AND ACCESSORIES & MOORING CHAIN

链径 Diameter Of Chain	船用锚链 ANCHOR CHAIN				海洋系泊链 OFFSHORE MOORING CHAIN											
	ABS,BV,CCS,CR,DNV,GL, KR,LR,NK,RINA,RMRS				API		ABS	DNV ABS	ABS/DNV	ABS/DNV			ABS/DNV			
	Grade2		Grade3		ORQ		RQ3	C/EL/E/SL	C/EL/E/SL	C/EL/E/SL	C/EL/E	SL	C/EL/E/SL	C/EL/E	SL	C/EL/E/SL
	拉力负荷 PL	破断负荷 BL	拉力负荷 PL	破断负荷 BL	拉力负荷 PL	破断负荷 BL	拉力负荷 PL	拉力负荷 PL	破断负荷 BL	拉力负荷 PL	拉力负荷 PL	破断负荷 BL	拉力负荷 PL	拉力负荷 PL	破断负荷 BL	
	C=1422	C=1991	C=1991	C=2844	C=2030.5	C=3060.3	C=2147	C=2265.2	C=3236	C=2610	C=2527	C=3610	C=3125	C=2783.9	C=3977	
in	lbf	lbf	lbf	lbf	lbf	lbf	lbf	lbf	lbf	lbf	lbf	lbf	lbf	lbf	lbf	
2 15/16	467000	654000	654000	934000	666341	1004287	704573	743362	1061945	856514	829276	1184680	1025519	913582	1305116	
3	485000	679000	679000	970000	692677	1043979	732419	772742	1103917	890365	862051	1231501	1066051	949689	1356698	
3 1/16	504000	705000	705000	1008000	719421	1084286	760698	802577	1146538	924742	895334	1279049	1107210	986356	1409079	
3 1/8	523000	732000	732000	1046000	746566	1125199	789400	832860	1189799	959634	929117	1327310	1148987	1023573	1462247	
3 3/16	542000	759000	759000	1084000	774107	1166708	818522	863584	1233692	995036	963393	1376275	1191374	1061333	1516190	
3 1/4	562000	787000	787000	1124000	802038	1208804	848055	894744	1278205	1030938	998153	1425933	1234361	1099628	1570897	
3 5/16	582000	814000	814000	1163000	830353	1251479	877995	926331	1323330	1067334	1033392	1476274	1277938	1138448	1626355	
3 3/8	602000	843000	843000	1204000	859045	1294723	908333	958340	1369057	1104215	1069100	1527285	1322096	1177787	1682552	
3 7/16	622000	871000	871000	1244000	888109	1338528	939065	990763	1415376	1141573	1105271	1578958	1366826	1217635	1739478	
3 1/2	643000	900000	900000	1285000	917539	1382883	970183	1023595	1462278	1179402	1141896	1631280	1412119	1257984	1797119	
3 9/16	664000	929000	929000	1327000	947328	1427780	1001681	1056827	1509752	1217693	1178969	1684242	1457965	1298826	1855465	
3 5/8	685000	958000	958000	1369000	977470	1473210	1033553	1090453	1557790	1256438	1216482	1737832	1504356	1340152	1914503	
3 3/4	728000	1019000	1019000	1455000	1038792	1565631	1098392	1158863	1655518	1335260	1292798	1846854	1598731	1424226	2034609	
3 7/8	772000	1080000	1080000	1543000	1101454	1660074	1164650	1228768	1755383	1415807	1370783	1958261	1695171	1510139	2157342	
3 15/16	794000	1111000	1111000	1587000	1133274	1708031	1198295	1264266	1806093	1456707	1410383	2014832	1744142	1553765	2219664	
4	816000	1143000	1143000	1632000	1165410	1756466	1232275	1300117	1857309	1498015	1450377	2071967	1793601	1597825	2282608	
4 1/8	862000	1207000	1207000	1724000	1230610	1854734	1301217	1372853	1961219	1581824	1531521	2187886	1893946	1687218	2410311	
4 1/4	908000	1272000	1272000	1817000	1297007	1954805	1371423	1446925	2067035	1667170	1614153	2305932	1996133	1778251	2540358	
4 3/8	956000	1338000	1338000	1911000	1364552	2056606	1442843	1522277	2174681	1753992	1698214	2426019	2100086	1870857	2672653	
4 1/2	1004000	1405000	1405000	2008000	1433196	2160004	1515426	1598856	2284079	1842227	1783643	2548061	2205732	1964972	2807102	
4 5/8	1053000	1474000	1474000	2105000	1502892	2265107	1589121	1676607	2395153	1931814	1870381	2671972	2312996	2060527	2943610	
4 3/4	1102000	1543000	1543000	2204000	1573591	2371662	1663876	1755478	2507825	2022690	1958367	2797667	2421803	2157458	3082083	
4 7/8	1153000	1613000	1613000	2305000	1645244	2479655	1739640	1835413	2622019	2114793	2047541	2925058	2532079	2255698	3222425	
5	1203000	1685000	1685000	2407000	1717804	2589014	1816363	1916360	2737657	2208061	2137843	3054061	2643751	2355180	3364543	
5 1/8	1255000	1757000	1757000	2509000	1791221	2699666	1893992	1998263	2854661	2302431	2229212	3184588	2756742	2455838	3508340	
5 1/4	---	---	---	---	1865448	2811539	1972478	2081070	2972957	2397842	2321589	3316555	2870979	2557606	3653723	
5 3/8	1359000	1903000	1903000	2718000	1940436	2924558	2051768	2164726	3092465	2494232	2414913	3449876	2986388	2660418	3800597	
5 1/2	---	---	---	---	2016137	3038652	2131813	2249176	3213109	2591537	2509125	3584463	3102894	2764207	3948867	
5 5/8	1466000	2052000	2052000	2935000	2092502	3153747	2212559	2334369	3334812	2689697	2604163	3720232	3220423	2868907	4098439	
5 3/4	1520000	2128000	2128000	3039000	2169484	3269771	2293958	2420248	3457497	2788649	2699968	3857097	3338900	2974452	4249217	
5 7/8	---	---	---	---	2247033	3386651	2375957	2506761	3581087	2888331	2796480	3994971	3458250	3080776	4401108	
6	1629000	2280000	2280000	3257000	2325102	3504313	2458504	2593854	3705505	2988680	2893638	4133768	3578401	3187811	4554015	
6 1/8	---	---	---	---	2403641	3622686	2541550	2681472	3830674	3089635	2991382	4273403	3699276	3295492	4707846	
6 1/4	1684000	2357000	2357000	3367000	2482604	3741695	2625043	2769561	3956516	3191133	3089653	4413790	3820801	3403753	4862504	
6 3/8	1795000	2512000	2512000	3589000	2651941	3861269	2708932	2858069	4082955	3293113	3188389	4554842	3942903	3512527	5017896	

试验力=c Xd<sup>2</sup> (44-2.032Xd)

Note: Test Load=c Xd<sup>2</sup> (44-2.032Xd)



无档锚链试验负荷

TESTING LOAD OF STUDLESS CHAIN

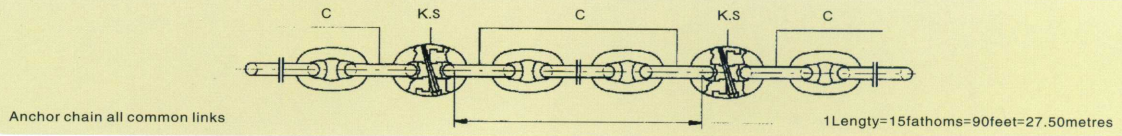
链径 Diameter Of Chain	Grade 1		Grade 2		Grade 3		质量近似值 Approx..mass (27.5m)
	拉力负荷 PL	破断负荷 BL	拉力负荷 PL	破断负荷 BL	拉力负荷 PL	破断负荷 BL	
mm	KN	KN	KN	KN	KN	KN	Kg
6	6.62	13.32	9.30	18.60			21.45
7	9.02	18.13	12.60	25.20			29.15
8	11.78	23.68	16.50	33.00			38.23
9	14.90	29.97	20.90	41.80			48.40
10	18.40	37.00	25.80	51.60			29.68
11	22.26	44.70	31.20	62.40			72.33
12.5	28.75	57.81	41.20	82.60			93.5
14	34.78	69.93	51.00	101.90			117.15
16	47.10	94.72	66.20	132.30	92.42	184.83	152.9
17.5	56.35	113.31	78.89	157.78	110.55	221.10	182.8
19	66.42	133.57	93.60	187.20	130.32	260.64	249.5
20.5	77.33	155.49	108.64	217.27	151.70	303.42	275.4
22	89.06	179.08	125.40	250.90	174.40	349.40	328.6
24	105.98	213.25	149.90	298.90	207.90	415.80	385.0
26	124.38	250.12	175.40	350.80	244.00	488.00	449.1
28	144.26	290.08	203.80	406.70	283.00	566.00	516.7
30	165.60	333.00	234.2	467.50	324.90	649.80	589.4
32	188.42	378.88	265.60	531.20	369.60	739.30	664.6
34	212.70	427.72	299.90	599.80	417.30	834.60	752.9
36	238.46	479.52	336.10	672.30	467.80	935.70	861.2
38	265.70	534.28	374.40	748.70	521.30	1042.50	957.5
40	249.40	592.00	414.50	829.10	577.60	1155.20	1056.2
42	324.58	652.68	457.70	915.30	636.80	1273.60	1166.5
44	356.22	716.32	502.70	999.60	698.90	1398.00	1270.4
46	389.34	782.92	548.80	1097.6	763.90	1527.80	1396.6
48	423.94	852.48	597.80	1195.6	831.70	1663.50	1520.6
50	460.00	926.09	648.80	1239.6	902.50	1805.00	1650.0



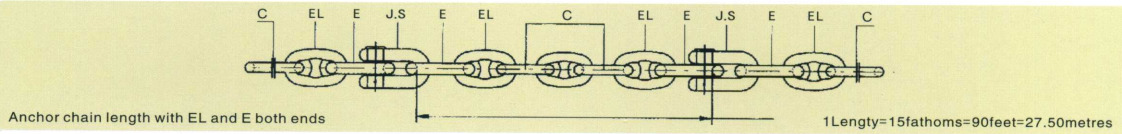
# 锚链连接形式

# Arrangement Of Anchor Chain

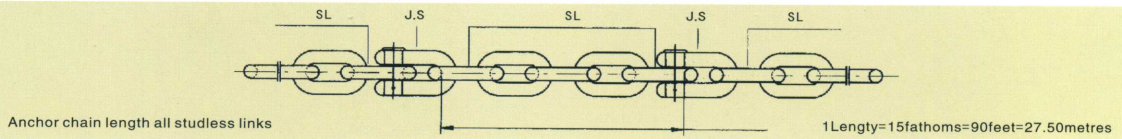
01a



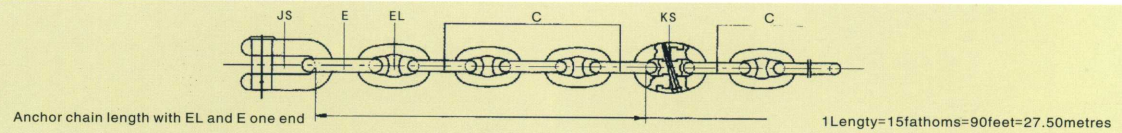
02a



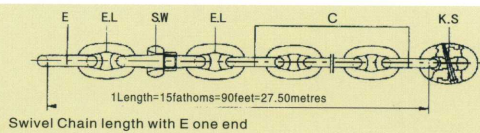
03a



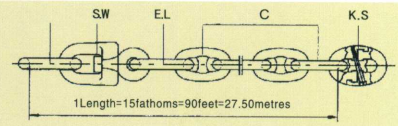
04a



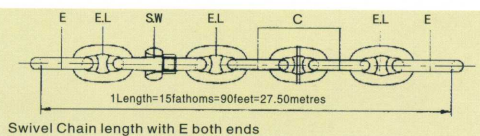
05sc



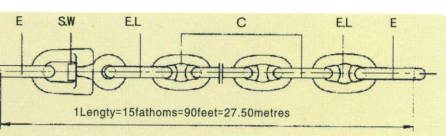
06sc



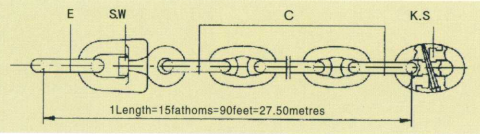
07sc



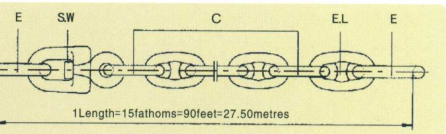
08sc



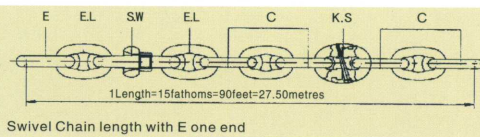
09sc



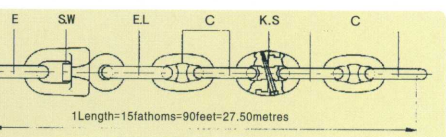
10sc



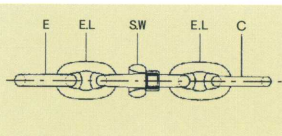
11sc



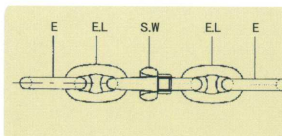
12sc



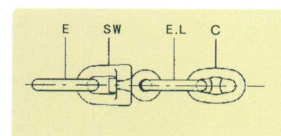
13sf



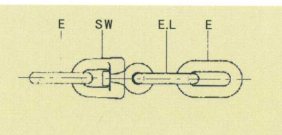
14sf



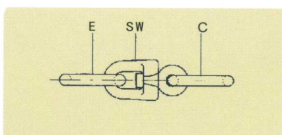
15sf



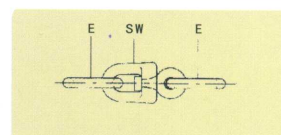
16sf



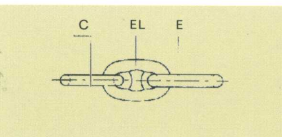
17sf



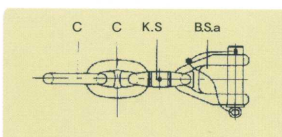
18sf



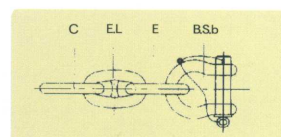
19ta



20ta



21ta

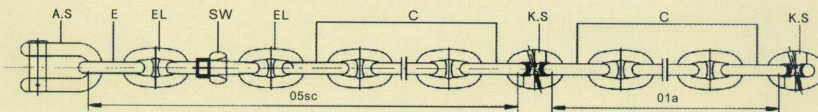




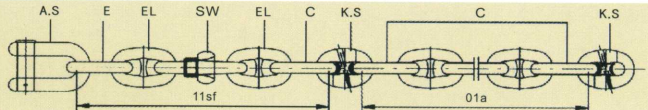
锚端和末端的连接形式(K.S)

Joining Forms (k. s) to Anchor and Locker Ends

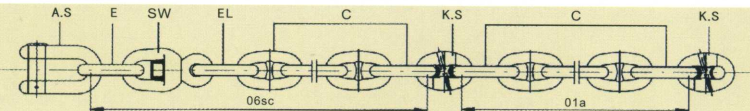
A1



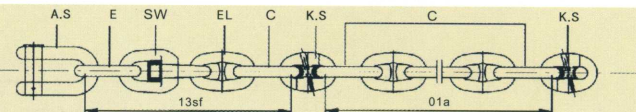
A2



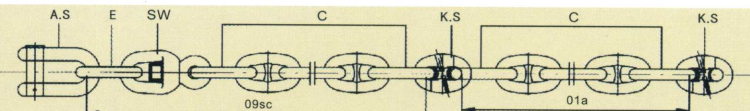
A3



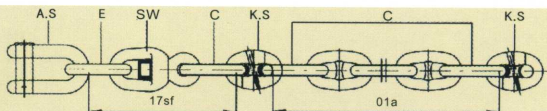
A4



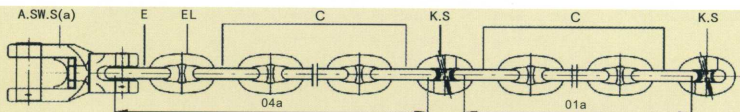
A5



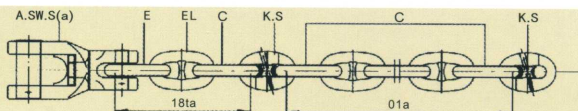
A6



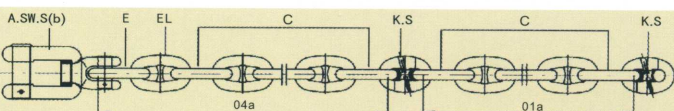
A7



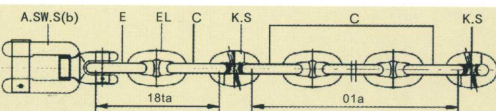
A8



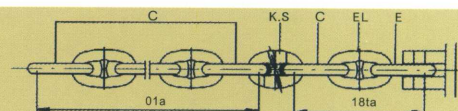
A9



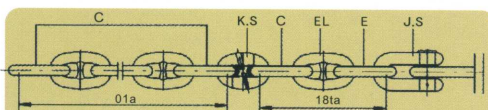
A10



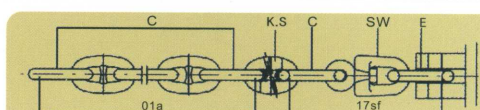
A11



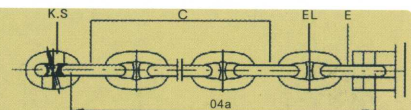
A12



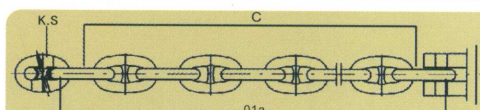
A14



A13



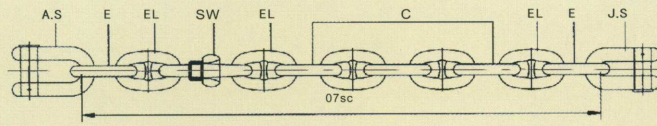
A15



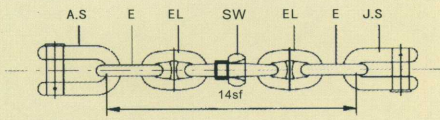


锚端和末端的连接形式(J. S) Joining Forms (J. S) to Anchor and Locker Ends

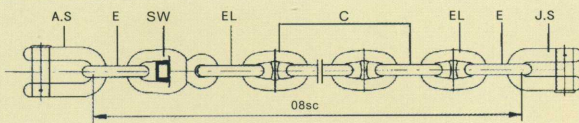
B1



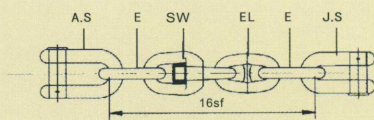
B2



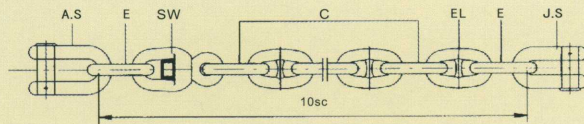
B3



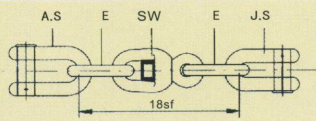
B4



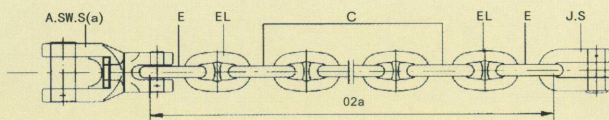
B5



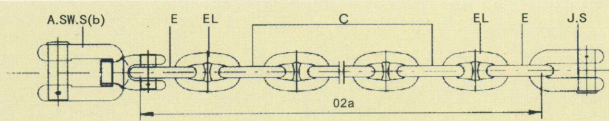
B6



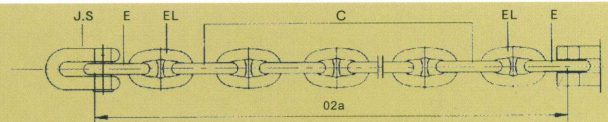
B7



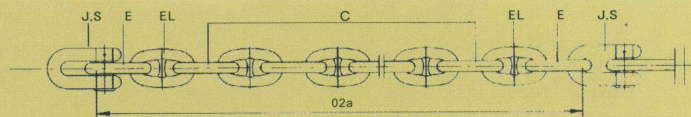
B8



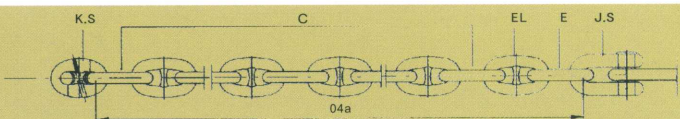
B9



B10



B11

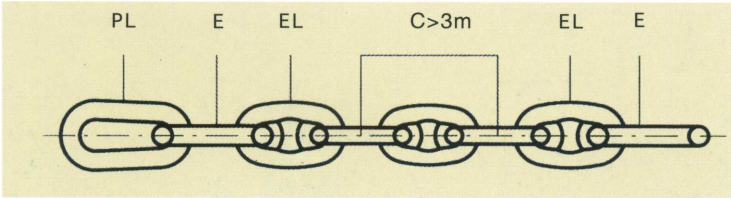




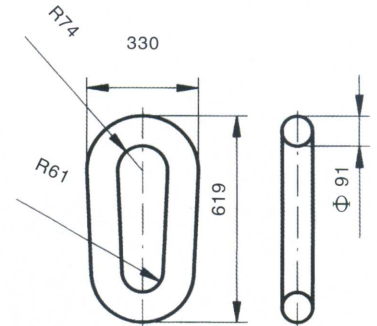
# 摩擦链

Chafe Chain=CC

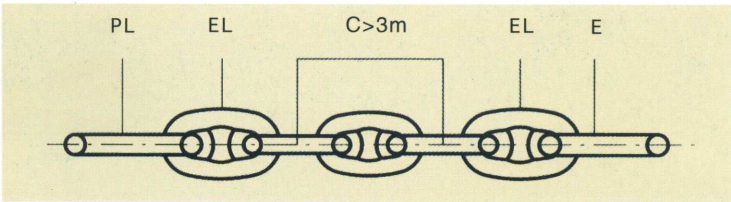
22CC



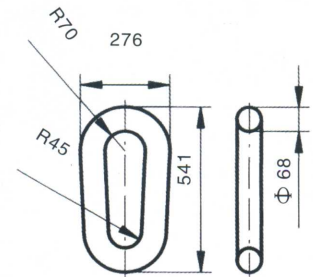
Φ 76PL



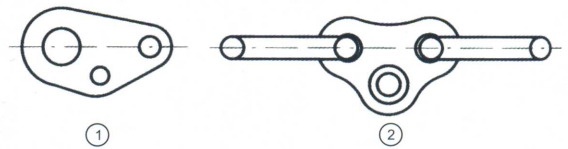
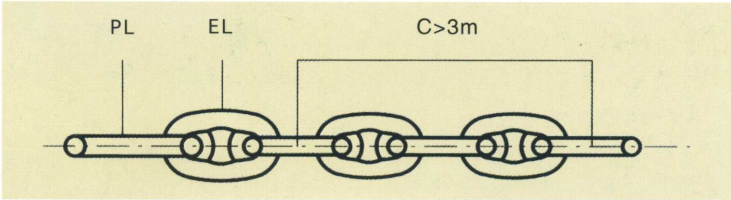
23CC



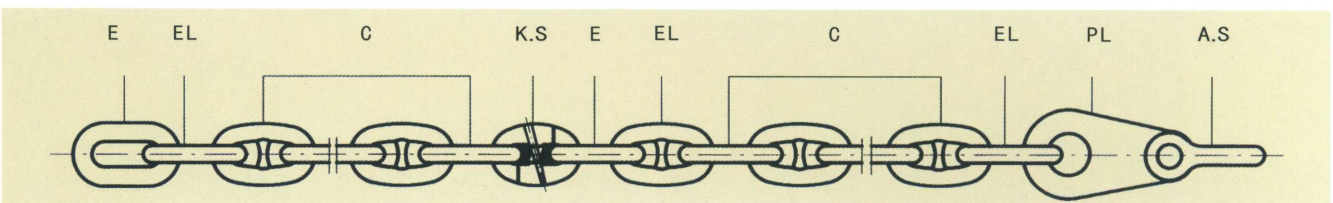
Φ 54PL



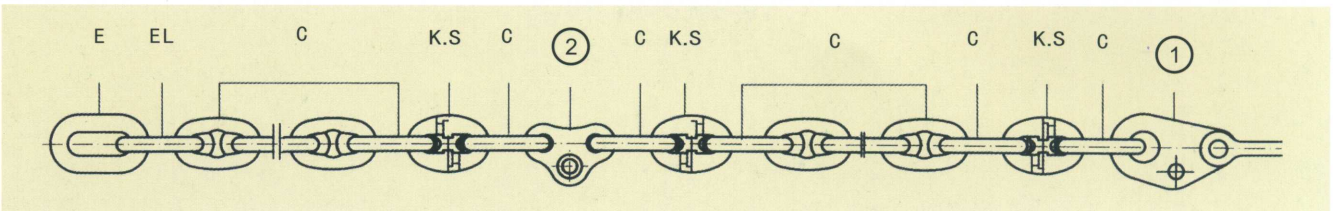
24CC



25CC



26CC





# 青岛风光

## Qingdao Scenery





 **青岛锚链股份有限公司**  
QINGDAO ANCHOR CHAIN CO.,LTD.

地址：中国青岛即墨乔兰路584号      Address: 584 Aolan Road, Jimo, Qingdao, China  
网址：<http://www.qd-anchor-chain.com>      Web Site: <http://www.qd-anchor-chain.com>  
邮箱：[qac@public.qd.sd.cn](mailto:qac@public.qd.sd.cn)      E-mail: [qac@public.qd.sd.cn](mailto:qac@public.qd.sd.cn)  
邮编：266200      Post code: 266200